

The Logans Bluff



Copyright © 2023
Frank Betz Associates



SQ FT

1,627



BEDS

3-4



BATH

2



1/2 BATHS

0



CAR

2



STORIES

1



WIDTH

50'



DEPTH

60'

FEATURES



Master On Main Floor
Split Bedrooms



Front Entry Garage



Kitchen Island
Open Floor Plan



Laundry On Main Floor



Front Porch
Rear Porch



Bonus Room
Flex Room

DETAILS

TOTAL HEATED AREA: **1,627 sq. ft.**

WIDTH: **50ft.**

FIRST FLOOR: **1,627 sq. ft.**

DEPTH: **60ft.**

SECOND FLOOR: **748 sq. ft.**

HEIGHT: **27ft.**

GARAGE: **546 sq. ft.**

FOUNDATION: **Crawlspace Foundation**

FLOORS: **1**

MAIN ROOF PITCH: **10:12**

BEDROOMS: **3-4**

EXTERIOR FRAMING: **2x4**

BATHROOMS: **2**

CEILING HEIGHTS

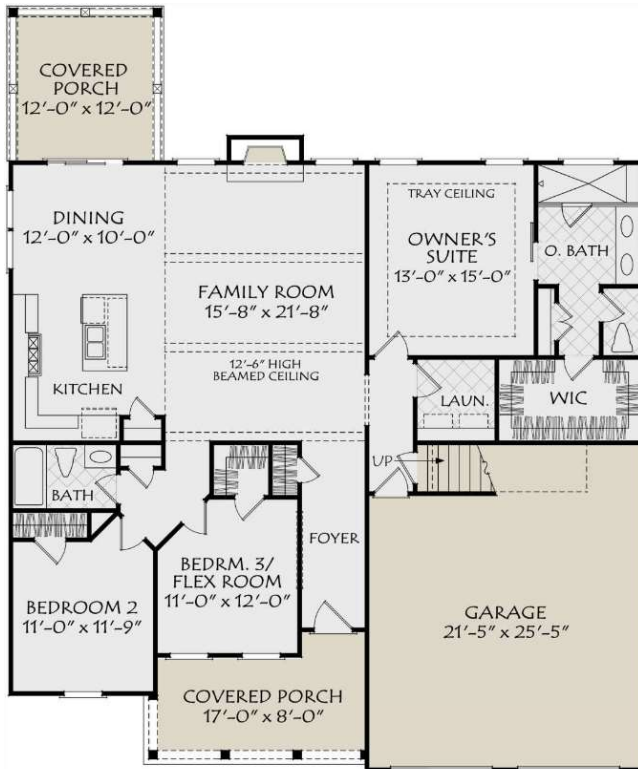
GARAGES: **2 car**

FIRST FLOOR: **9 feet**

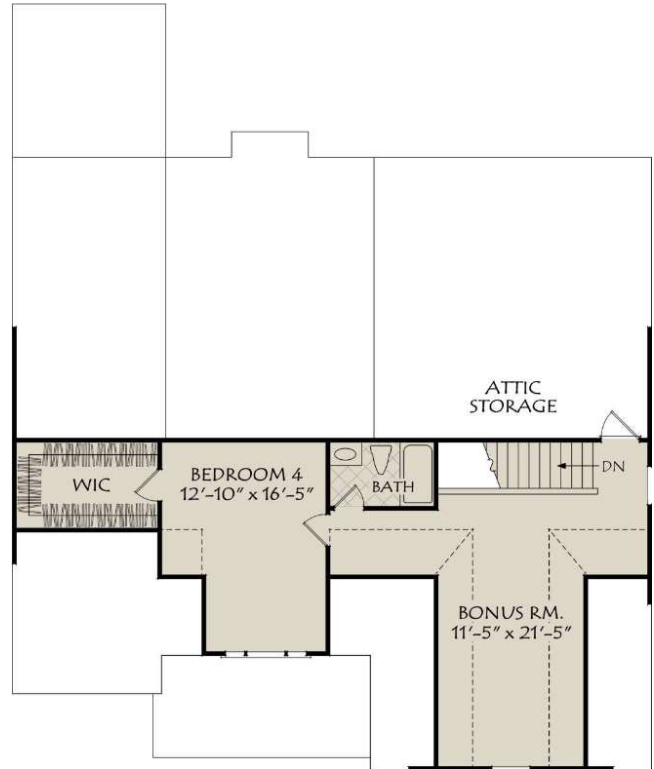
SECOND FLOOR: **8 feet**

If you are interested in this or one of our other featured homes, please contact info@palemohc.com or visit our webpage at www.palemohc.com

The Logans Bluff



FIRST FLOOR PLAN



OPT. SECOND FLOOR PLAN

This Modern Farmhouse house plan features:

- 1,627 sq ft of living space on the first floor
 - 3 bedrooms
 - 2 bathrooms
- 748 sq ft of optional living space on the second floor
 - Bonus room
 - 1 bedroom
 - 1 bathroom